

# JONEL

RESULTS DRIVEN CONCRETE SOLUTIONS

## Archer batching: Features

### Executive-level features

- Multiple language support for each client
- Unlimited amount of mix designs
- Supports large, complex plants with ease
- Support services via Internet or on site
- Migration pathways from Jonel and competitive controls
- Control your plant from any computer on the Internet
- Multiple maintenance plan options
- Integrated reporting
- In-depth auditing



### Information technology features

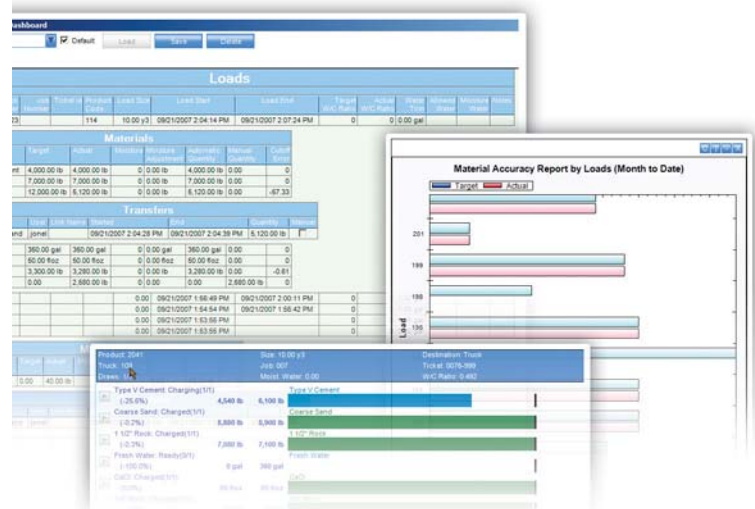
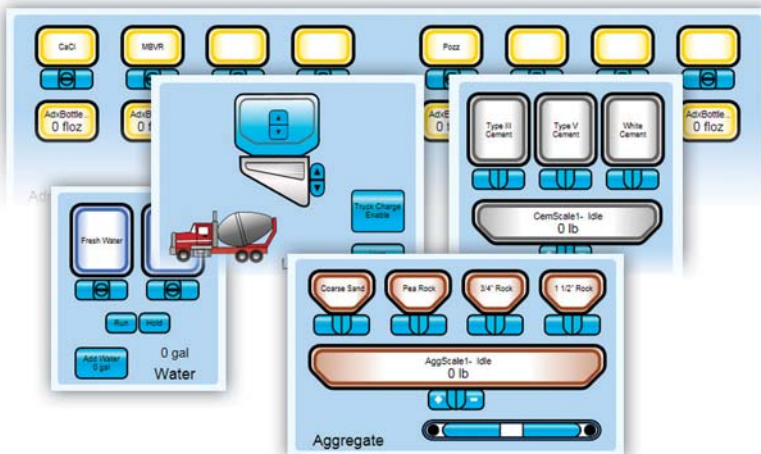
- ADO.NET to enable any database back end
- Integrated PLC for speed
- Client/Server architecture to enable access from any networkable device
- Open database platform
- Communicates with dispatch systems using industry standard protocol
- Windows based
- Real-time/Same batch moisture control
- Touch screen compatible
- Ability to control specific user permissions via administrator tool
- Written in C#
- Vector graphics to render cleanly at any size monitor resolution
- Microsoft .NET
- SQL Server Express bundled for free

©2008 Jonel Engineering

All Rights Reserved

An Equal Opportunity Employer

Printed in the U.S.A



Jonel can assess the situation, identify where and how to make those quick wins, and how to take advantage of the Jonel Engineering Concrete 360 to achieve even the most pressing business goals.

Call today at 800-432-4567 or email us at [sales@jonel.com](mailto:sales@jonel.com)

500 EAST WALNUT AVENUE  
FULLERTON, CA 92832  
800-432-4567 JONEL.COM